

Installation Guide

This short guide shall enable you to install TIM v7.13 on Windows or Linux OS.

JBOSS = WildFly

Preconditions for Windows or UNIX

Database access preferably db_owner on either MySQL 8, SQL Server 2019, or Oracle 19c according to our latest requirements in the release notes → [Release Notes - Documentation EN - TIM BPM Documentation \(atlassian.net\)](#)

Get additional tools if possible:

- notepad++ [Downloads | Notepad++ \(notepad-plus-plus.org\)](#)
- keystore explorer [KeyStore Explorer \(keystore-explorer.org\)](#)
- jxplorer [JXplorer - an open source LDAP browser](#)
- 7z [7-Zip](#) for Windows
- Latest JDK 11 from [Latest Releases | Adoptium](#) or [Downloads for Amazon Corretto 11 - Amazon Corretto](#)
- MSSQL Management Studio or MySQL Workbench
- open Ports for incoming connections, such as 443/8443

Windows OS

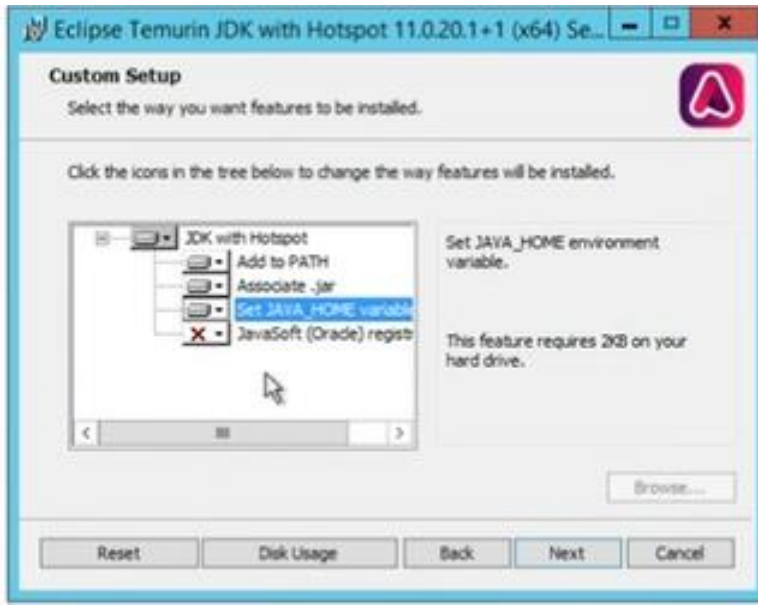
Quick guide for Windows installation with WildFly29 & TIM v7.13

Resources

- <https://s3.eu-central-1.amazonaws.com/delivery.aws.tim-bpm.com/setup/wildfly-29.0.1.Final/wildfly-29.0.1.Final.zip>
- <https://s3.eu-central-1.amazonaws.com/delivery.aws.tim-bpm.com/setup/wildfly-29.0.1.Final/wildfly-29.0.1.Final-JWT-delta.zip>
- https://s3.eu-central-1.amazonaws.com/delivery.aws.tim-bpm.com/TIM_7.13.0.zip

Installation

1. Install JDK and set JAVA_HOME for the system. Can be checked via system environmental variables.



2. On Disk create folder tim e.g. C:\tim
3. Unzip [wildfly](#) as per request to C:\tim\wildfly-VERSION and rename the folder to wildfly-VERSION-dev, -stage or -prod according to purpose.
4. Copy & replace the content of [wildfly-VERSION-JWT-delta.zip](#) into WildFly Home e.g. C:\tim\wildfly-VERSION-dev
5. Copy folder service from C:\tim\wildfly-VERSION-\docs\contrib\scripts to C:\tim\wildfly-VERSION.Final-\bin
6. Edit with notepad++ C:\tim\wildfly-VERSION-dev\bin\service\service.bat and change SHORTNAME and DISPLAYNAME to e.g. TIM24DEV / Timprod-WildFly29

CONTROLLER=localhost:9990 in service.bat needs to match jboss.management.http.port in standalone-tim.xml

important if multiple app server are installed on one host machine

Copy from https://s3.eu-central-1.amazonaws.com/delivery.aws.tim-bpm.com/setup/jbcs-jsvc-1.1.0-win6-x86_64.zip

\jbcs-jsvc-1.1.0-win6-x86_64\jbcs-jsvc-1.1\bin\prunmgr.exe
 \jbcs-jsvc-1.1.0-win6-x86_64\jbcs-jsvc-1.1\sbin\prunsrv.exe

into the \bin folder when having trouble with shut-down of service

6. Open C:\tim\wildfly-VERSION.Final\standalone\configuration\tim.properties and add
 keypair-password=changeit
7. Run the following keytool command to create a jwt.keystore and adding the key

```
keytool -genkey -alias jwt.key -keyalg RSA -keysize 2048 -keystore
C:\tim\wildfly-VERSION.Final\standalone\configuration\jwt.keystore -
storepass changeit -keypass changeit
```

8. Iterate through the questions

```
C:\Program Files (x86)\Eclipse Adoptium\jdk-11.0.20.101-hotspot\bin>keytool -genkey -alias jwt.key -keyalg RSA -keysize
2048 -keystore C:\tim\wildfly-29.0.1.Final\standalone\configuration\jwt.keystore -storepass changeit -keypass changeit
what is your first and last name?
[Unknown]:
what is the name of your organizational unit?
[Unknown]:
what is the name of your organization?
[Unknown]:
what is the name of your City or Locality?
[Unknown]:
what is the name of your State or Province?
[Unknown]:
what is the two-letter country code for this unit?
[Unknown]:
Is CN=Unknown, OU=Unknown, O=Unknown, L=Unknown, ST=Unknown, C=Unknown correct?
[no]: yes

Warning:
The JKS keystore uses a proprietary format. It is recommended to migrate to PKCS12 which is an industry standard format
using "keytool -importkeystore -srckeystore C:\tim\wildfly-29.0.1.Final\standalone\configuration\jwt.keystore -destkeyst
ore C:\tim\wildfly-29.0.1.Final\standalone\configuration\jwt.keystore -deststoretype pkcs12".
```

9. Open C:\tim\wildfly-VERSION.Final-dev\bin\standalone.conf.bat to check for XMS and rem all lines from 96 to 104 regarding port offset and the DB connection string

10. set "JAVA_OPTS=%JAVA_OPTS% -Xms2G -Xmx2G -XX:MetaspaceSize=96M -XX:MaxMetaspaceSize=512m"

11.

12. rem TIM Solutions GmbH Configuration part

13. rem Feel free to edit this configuration below!

14. rem set "JAVA_OPTS=%JAVA_OPTS% -Djboss.socket.binding.port-offset=0"

15. rem set "JAVA_OPTS=%JAVA_OPTS% -Djboss.http.port=8080"

16. rem set "JAVA_OPTS=%JAVA_OPTS% -

```
Djboss.JDBC_CONNECTION=jdbc:sqlserver://database.fqdn:1433;database=tim
;encrypt=true;loginTimeout=30;"
```

17. rem set "JAVA_OPTS=%JAVA_OPTS% -Djboss.JDBC_DRIVER=sqlserver"

18. rem set 'JAVA_OPTS=%JAVA_OPTS% -Djboss.CHECK_ALIVE_QUERY="SELECT 1 FROM TIM_DUAL"'

19. rem set "JAVA_OPTS=%JAVA_OPTS% -Djboss.DBUSER=tim"

```
rem set "JAVA_OPTS=%JAVA_OPTS% -Djboss.DBPASSWORD=t1m"
```

20. Open under C:\tim\wildfly-VERSION.Final-dev\standalone\configuration\standalone-tim.xml to configure the data source. e.g. connection URL

```
<!-- datasource -->
<subsystem xmlns="urn:jboss:domain:4.0" ... >
  <datasource name="tim" jndi="java:/DefaultDS" pool="tim" use-java-class="true" use-java-class="true" ... >
    <connection-url>jdbc:sqlserver://database.windows.net:1433;database=tim;encrypt=true;loginTimeout=30;
    <driver>com.microsoft.jdbc.sqlserver.SQLServerDriver
    <driver-class>com.microsoft.jdbc.sqlserver.SQLServerDriver
    <username>tim
    <password>t1m
    <validation>
      <validate-on>Connection
      <validate-query>SELECT 1 FROM TIM_DUAL
    </validation>
  </datasource>
</subsystem>
```

11. SET 'SELECT 1 FROM TIM_DUAL' only for ORA DB

12. Open under C:\tim\wildfly-VERSION.Final-dev\standalone\configuration\tim.properties to set default client and add initpass for custom passwords (after the initial init of the system credentials can be encrypted via admin panel)

13. default-client=

14.

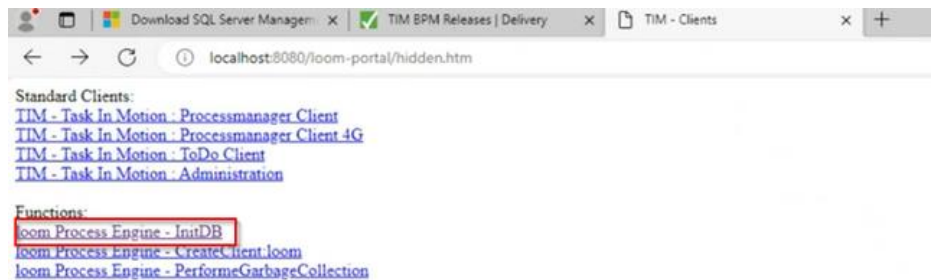
15. #initpass-super-admin=

16. #initpass-super-sys.support=

17. #initpass-x-admin=

18. #initpass-x-sys.support=
#initpass-x-others=
19. Encoding via the administration panel of secrets is possible after the initialization of the application.
20. Copy tim.ear and dashboard.war from [TIM x.x.x.zip](#) into C:\tim\wildfly-VERSION.Final-dev\standalone\deployments
21. Open cmd as admin and install the service.
22. cd C:\tim\wildfly-VERSION.Final-dev\bin\service
23.


```
service.bat install /config standalone-tim.xml
```
24. Open Windows Services and navigate to e.g. TIM24DEV. Set starttyp to automatic.
25. Start TIM Service and check server.log C:\tim\wildfly-24.0.1.Final-dev\standalone\log for any issues to resolve. 😊 Popular issues: closed ports, the network connection to the database, missing permissions, or antivirus tool intervention.
26. Open <http://127.0.0.1:8080/loom-portal/hidden.htm> to initialize the database. (InitDB)



27. Open Eclipse for licence generation, ID Token, Multi or Single Node, Validity in month, Customer Name, values have to be provided from Ticket except ID and Node copy and paste licence into customer page. Customers can order a license under <https://webform.tim-solutions.de/licenserequest/>

The difference between single and multi node license depends on the database instance. As soon as a multi node token is displayed, a multi node license should be ordered.

20. Open <http://127.0.0.1:8080/loom-portal/license.htm> to install the licence as super/admin.
21. Log into super tenant <http://localhost:8080/tim/client/> to create a customer tenant. [Tenant Creation - Documentation EN - TIM BPM Documentation \(atlassian.net\)](#)
22. Replace unencrypted Passwords with encrypted ones in C:\tim\wildfly-VERSION.Final-dev\standalone\configuration\tim.properties

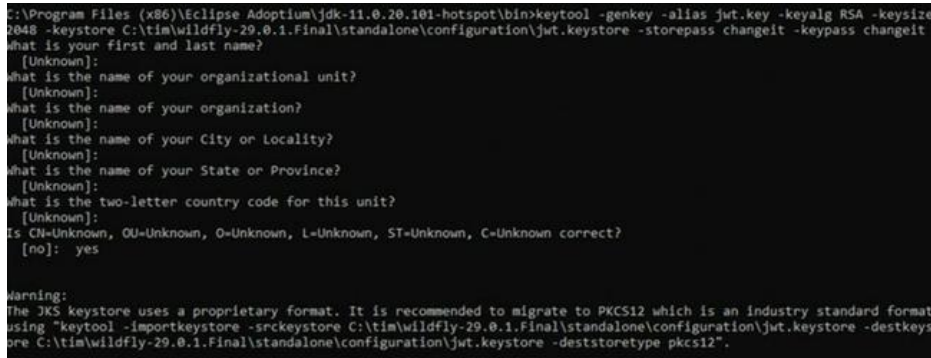
For further configuration check [Documentation EN - TIM BPM Documentation \(atlassian.net\)](#) e.g SMTP, LDAP Auth & Sync or SSO with SAML

UNIX

20. Run the following keytool command to create a jwt.keystore and adding the key

```
keytool -genkey -alias jwt.key -keyalg RSA -keysize 2048 -keystore  
usr/local/tim/wildfly-  
VERSION.Final/standalone/configuration/jwt.keystore -storepass changeit  
-keypass changeit
```

21. Iterate through the questions



```
C:\Program Files (x86)\Eclipse Adoptium\jdk-11.0.20.101-hotspot\bin>keytool -genkey -alias jwt.key -keyalg RSA -keysize  
2048 -keystore C:\tim>wildfly-29.0.1.Final\standalone\configuration\jwt.keystore -storepass changeit -keypass changeit  
what is your first and last name?  
[Unknown]:  
what is the name of your organizational unit?  
[Unknown]:  
what is the name of your organization?  
[Unknown]:  
what is the name of your City or Locality?  
[Unknown]:  
what is the name of your State or Province?  
[Unknown]:  
what is the two-letter country code for this unit?  
[Unknown]:  
is CN=Unknown, OU=Unknown, O=Unknown, L=Unknown, ST=Unknown, C=Unknown correct?  
[no]: yes  
  
warning:  
The JKS keystore uses a proprietary format. It is recommended to migrate to PKCS12 which is an industry standard format  
using "keytool -importkeystore -srckeystore C:\tim>wildfly-29.0.1.Final\standalone\configuration\jwt.keystore -destkeyst  
ore C:\tim>wildfly-29.0.1.Final\standalone\configuration\jwt.keystore -deststoretype pkcs12".
```

22. Open under /usr/local/tim/wildfly-
VERSION.Final/standalone/configuration/tim.properties to set default client and add
initpass for custom passwords (after the initial init of the system credentials can be
encrypted via admin panel)

```
23. default-client=  
24.  
25. #initpass-super-admin=  
26. #initpass-super-sys.support=  
27. #initpass-x-admin=  
28. #initpass-x-sys.support=  
#initpass-x-others=
```

29. Encoding via the administration panel of secrets is possible after the initialization of the
application.

30. Copy tim.ear and dashboard.war from [TIM x.x.x.zip](#) into /usr/local/tim/wildfly-
VERSION.Final/standalone/deployments

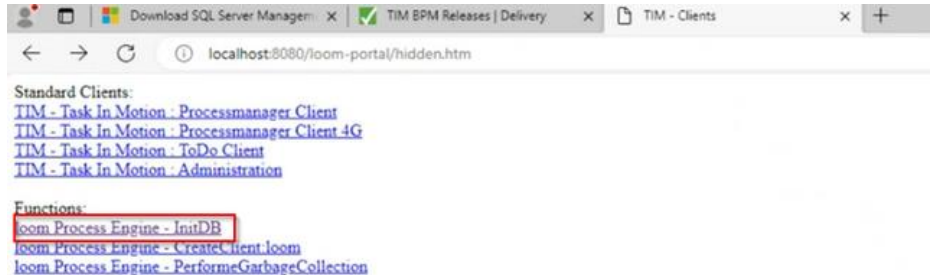
31. Set WILDFLY_CONFIG=standalone-tim.xml in /etc/default/wildfly.conf

32. Set below parameters for /etc/systemd/system/wildfly.service

```
33. [Service]  
34. Environment=LAUNCH_JBOSS_IN_BACKGROUND=1  
35. EnvironmentFile=-/etc/default/wildfly.conf  
36. User=tim  
37. LimitNOFILE=102642  
38. PIDFile=/run/wildfly/wildfly.pid  
39. ExecStart=/usr/local/tim/wildfly-VERSION.Final/bin/launch.sh  
$WILDFLY_MODE $WILDFLY_CONFIG $WILDFLY_BIND  
StandardOutput=null
```

40. Enable service with systemctl enable wildfly.service & systemctl daemon-reload

41. Run `systemctl start wildfly.service` and check `server.log /usr/local/tim/wildfly-VERSION.Final/standalone/log` for any issues to resolve. Popular issues: closed ports, the network connection to the database, missing permissions, or antivirus tool intervention.
42. Open <http://127.0.0.1:8080/loom-portal/hidden.htm> to initialize the database. (InitDB)



43. Open Eclipse for licence generation, ID Token, Multi or Single Node, Validity in month, Customer Name, values have to be provided from Ticket except ID and Node copy and paste licence into customer page. Customers can order a license under <https://webform.tim-solutions.de/licenserequest/>

The difference between single and multi node license depends on the database instance. As soon as a multi node token is displayed, a multi node license should be ordered.

23. Open <http://127.0.0.1:8080/loom-portal/license.htm> to install the licence as super/admin.
24. Log into super tenant <http://localhost:8080/tim/client/> to create a customer tenant. [Tenant Creation - Documentation EN - TIM BPM Documentation \(atlassian.net\)](#)
25. Replace unencrypted Passwords with encrypted ones in `/usr/local/tim/wildfly-VERSION.Final/standalone/configuration/tim.properties`

For further configuration check [Documentation EN - TIM BPM Documentation \(atlassian.net\)](#) e.g SMTP, LDAP Auth & Sync or SSO with SAML

Additional Configuration

[Configuration Properties](#)

<https://tim->

[doc.atlassian.net/wiki/spaces/eng/pages/228102152/Module+Requirements#Mailserver](https://tim-)

[https://tim-doc.atlassian.net/wiki/spaces/eng/pages/228102152/Module+Requirements#SAML-2.0](https://tim-)

[https://tim-doc.atlassian.net/wiki/spaces/eng/pages/228102152/Module+Requirements#LDAP](https://tim-)

[LDAP](#)

[Dashboard](#)

▼ Extended jwt.keystore explanation

KEYSTORE GENERATION

There is a command to create a keystore:

```
keytool -genkey -alias jwt.key -keyalg RSA -keysize 2048 -keystore  
jwt.keystore -storepass changeit -keypass changeit
```

The generated keystore must be located under standalone/configuration folder and must have a name **jwt.keystore**

TIM.PROPERTIES CONFIGURATION

Text above highlighted in bold can be changed and must be the same as defined in tim.properties. The tim.properties file has the following properties:

1. Value of keystore-password property must be equal to the *-storepass* value of the aforementioned command
2. Value of *keypair-name* property must be equal to the *-alias* value of the aforementioned command
3. Value of keypair-password property must be equal to the *-keypass* value of the aforementioned command

STANDALONE XML CONFIGURATION

Additionally, the standalone file must contain the keystore-password in the section of keystores definition:

```
<key-store name="jwt-key-store">  
    <credential-reference clear-text="changeit"/>  
    <implementation type="JKS"/>  
    <file path="jwt2.keystore" relative-to="jboss.server.config.dir"/>  
</key-store>
```

Have a look at the `<credential-reference clear-text="changeit"/>`. Credential-reference must be equal to the keystore-password.

When defining a certificate parameter for jwt issuer in the standalone config, we must put a value of the certificate name:

```
<token-realm name="tim-jwt-realm" principal-claim="uid">  
    <jwt issuer="TimBpmSuite" audience="TimBpmSuiteAudience" key-  
store="jwt-key-store" certificate="jwt.key"/>  
</token-realm>
```

This value must be equal to *keypair-name* property value in tim.properties and *-alias* of the keystore generation command

Azure SaaS Considerations

1. Azure Application Gateway
2. App Gateway Listener

3. Check Firewall Port
4. Log into the customer tenant to configure SMTP settings or create customer accounts as per ticket.

Installation TIM v7.14 or higher

From v7.14 onwards, TIM requires JDK 17.

- [Preconditions for Windows or UNIX](#)
- [Windows OS](#)
 - [Resources](#)
 - [Installation](#)
- [UNIX](#)
 - [Resources](#)
 - [Installation](#)
- [Additional Configuration](#)
 - [KEYSTORE GENERATION](#)
 - [TIM.PROPERTIES CONFIGURATION](#)
 - [STANDALONE XML CONFIGURATION](#)
- [Azure SaaS Considerations](#)
- [Installation TIM v7.14 or higher](#)

SSL

Convert pfx to jks with `keytool -importkeystore -srckeystore mypfxfile.pfx -srcstoretype pkcs12 -destkeystore clientcert.jks -deststoretype JKS`

Change standalone-igrafx for ssl, remember to change basedir to configdir

Check /and add if necessary) pagefile on c: